



2235 - 42 NORTHWEST 2ND AVENUE

WYNWOOD
RETAIL FOR LEASE
756 SF to 1,125 SF

WYNWOOD



2235 - 42 NORTHWEST 2ND AVENUE



*New-to-market
retail opportunity
in one of America's
coolest urban markets.*



IMPROVED VANILLA BOX DELIVERY



- First-generation retail delivered in vanilla shell condition
- Small functional bays with expansive impact storefronts
- All new mechanical systems
- Exceptional location
- Co-tenancy with some of Wynwood's most recognizable brands and attractions including:



Miamiarts
charter school



WYNWOOD WALLS



La SANDWICHIERIE
SINCE 1986

1-800

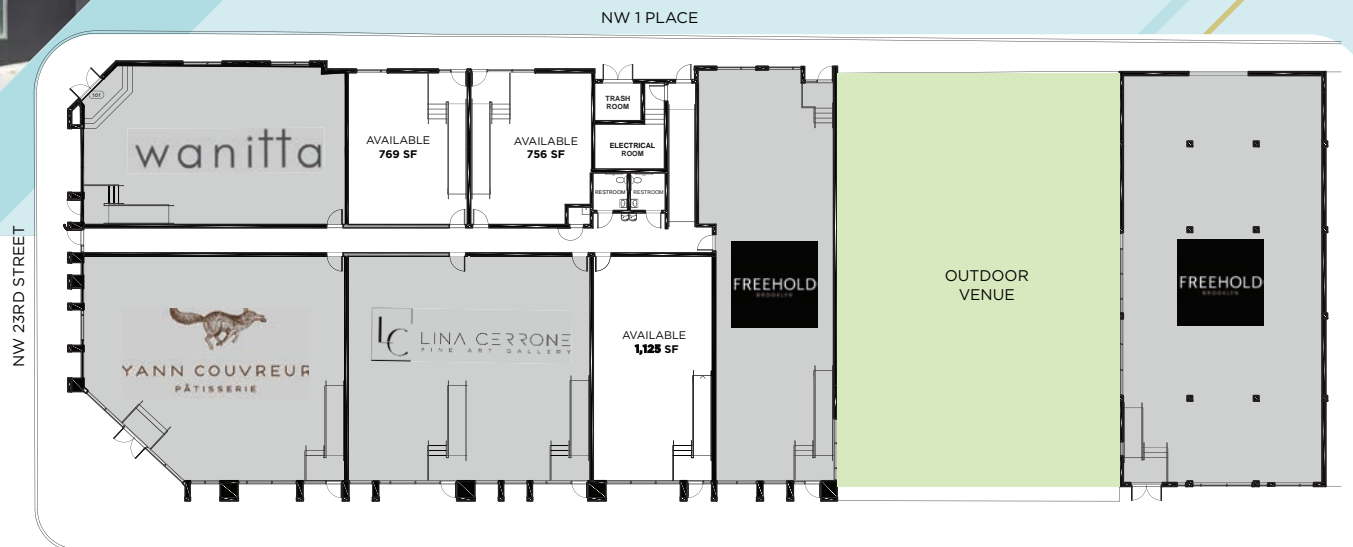


LUCKY

frangipani
funly fresh fun



2235 - 42 NORTHWEST 2ND AVENUE



Available Bays: (Dry Use Only):

- Suite 1: 756 SF (2234)
- Suite 2: 769 SF (2242)
- Suite 3: 1,125 SF (2237)

For more information contact:

Frank Begrowicz
Managing Director
Retail Brokerage
786 246 3878 Cell
305 533 2874 Direct
frank.begrowicz@cushwake.com

Greg Masin
Executive Director
Retail Brokerage
305 720 6807 Cell
305 533 2857 Direct
greg.masin@cushwake.com



©2024 Cushman & Wakefield. NO WARRANTY OR REPRESENTATION, EXPRESS OR IMPLIED, IS MADE TO THE ACCURACY OR COMPLETENESS OF THE INFORMATION CONTAINED HEREIN, AND SAME IS SUBMITTED SUBJECT TO ERRORS, OMISSIONS, CHANGE OF PRICE, RENTAL OR OTHER CONDITIONS, WITHDRAWAL WITHOUT NOTICE, AND TO ANY SPECIAL LISTING CONDITIONS IMPOSED BY THE PROPERTY OWNER(S), AS APPLICABLE. WE MAKE NO REPRESENTATION AS TO THE CONDITION OF THE PROPERTY (OR PROPERTIES) IN QUESTION.