

7,100 SF RETAIL / OFFICE FOR LEASE

Ground floor retail below the Wynwood Garage.

The space is grey shell condition and suitable for a variety of uses including dry retail; food and beverage or office; with an expansive, double-height glass façade. Tenant will have the opportunity for a direct, branded entrance within the adjacent elevator vestibule, in addition to street front signage.

Property Highlights

- Open floor plan
- Double-height ceilings
- Expansive, full-height storefront
- Functional back-of-house with delivery access
- On-site, 428-space garage

For more information, please contact:

Frank Begrowicz
Senior Director

305 533 2874

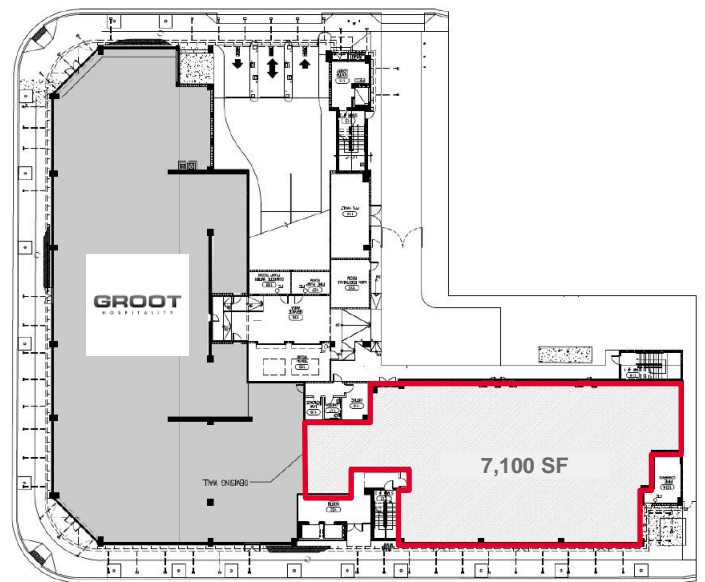
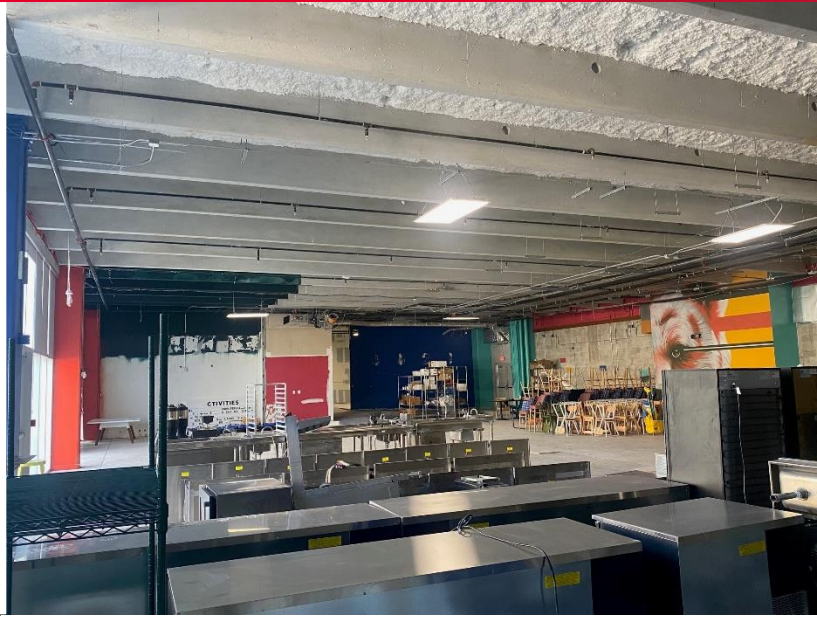
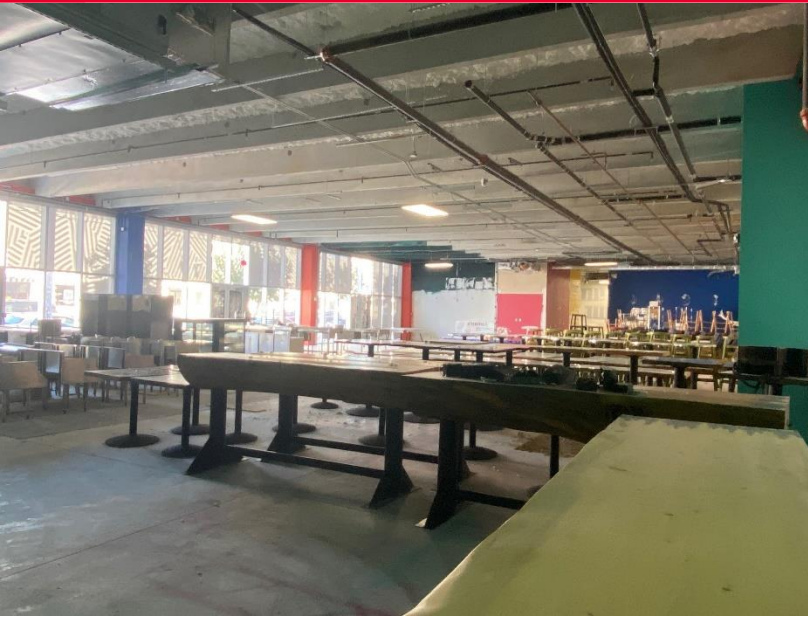
frank.begrowicz@cushwake.com

Greg Masin
Executive Director

305 533 2857

greg.masin@cushwake.com

333 SE 2nd Avenue
Suite 3900
Miami, FL 33131



7,100 SF FOR LEASE
RETAIL / OFFICE

Area Amenities

- Co-tenancy with several of the markets most sought after retail and restaurant venues
- Within walking distance to the Wynwood Walls



For more information, please contact:

Frank Begrowicz
Senior Director
305 533 2874
frank.begrowicz@cushwake.com

Greg Masin
Executive Director
305 533 2857
greg.masin@cushwake.com

333 SE 2nd Avenue
Suite 3900
Miami, FL 33131